

Product Design

OIDD 415/515
MEAM 415
IPD 515

- **Design Fair Info**
- **Alpha Prototype Pitch**
- **Designing a Logo**

Coming up:

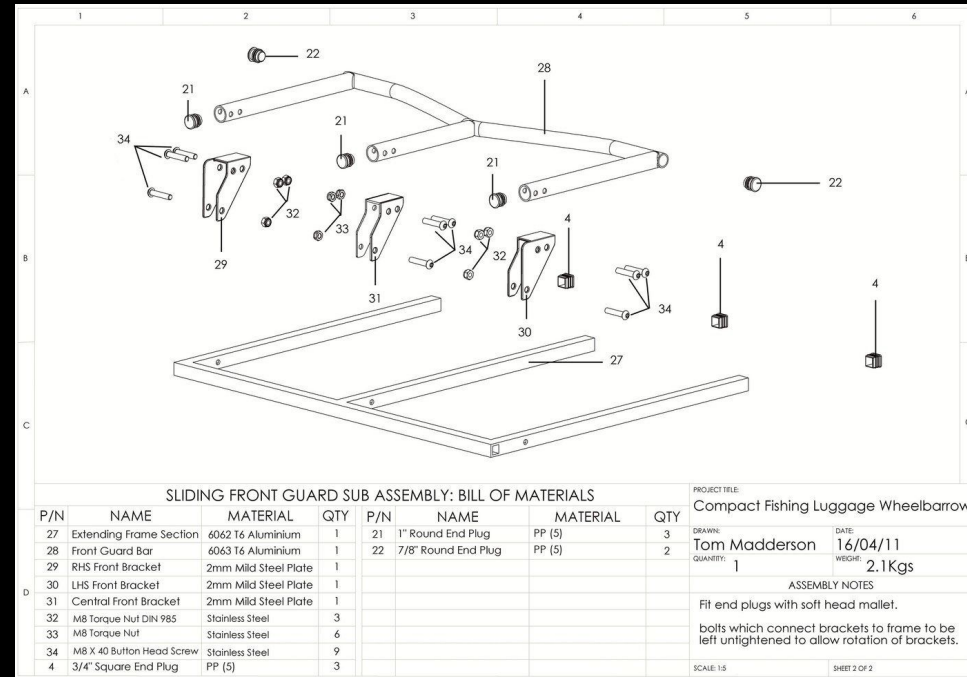
- **NO CLASS WEEK OF THANKSGIVING (Nov 22/23)**
- Prof. Ashley will hold **ZOOM OFFICE HOURS**
 - Monday 3:30 - 4:30 PM
 - Tuesday 12 - 1 PM
 - No TA office hours Thanksgiving week

Upcoming Schedule

- Nov 22/23 - no class; Zoom office hours with Prof. Ashley
- Nov 29/30 - in class work time, each team meets with Prof. Ashley - last class before Design Fair
- TUESDAY December 7 - Design Fair, 6:30- 8:30 PM (prepare to be there 5:30 - 9:30 PM)
- Keep your receipts for reimbursement. Penn does not reimburse sales tax!

Due Nov 30

- Team Assembly Drawing/BOM
- Team Cost Model (preliminary)
- 10 Product Names Assignment (Individual)
- Lecture: Entrepreneurial Product Development
- You should be working on your Design Fair materials over Thanksgiving break!



Sample Assembly Drawing with Bill of Materials (BOM) - yours can be hand drawn

Design Fair

- Tuesday December 7
 - Total time 5:30 - 9:30 PM (setup and breakdown)
 - Event time 6:30 - 8:30 PM
- Each team will have a 30" table and easel to present their product to potential customers (invite your friends!)
 - Easel has no back, posters must be self-supporting (mounted on foamcore using a sprayable adhesive, purchasable at Plaza)
 - Campus Copy Center will mount your poster on foamcore for a fee

Printouts for Design Fair

You will provide:

- 24 x 36" poster mounted on foamcore
- 5 x 7" small version of poster for voting box
- Sell sheets

24" x 36"

- Product Name
- Price
- Picture/Rendering
- Attributes/Benefits/How it works
- Portrait or Landscape
- **Less is More!**

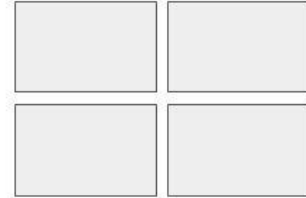
Poster, Mounted on Foam Core

5" x 7"

- Small version of poster
- Portrait

For Voting Box
(not mounted)

8.5" x 11" sheet cut in 4



Sell Sheets
(to give away to shoppers)

- [www.Canva.com](https://www.canva.com) (great online tool for making posters)
- High quality poster printing available at Vitale Digital Media Lab (Van Pelt, set up an appointment online) or Campus Shipping Center

Alpha Prototype Pitch

- Two minutes to present, two minutes for questions
- Voting for your top FOUR products you think are the most well rounded
 - Quality of prototype
 - Quality of pitch
 - Would you buy it?

Alpha Prototype Pitch

<https://bit.ly/3Dqe39u>

Vote for the top four ideas you think are great products. Don't vote for your own project!



Product Design

OIDD 415/515
MEAM 415
IPD 515

- Alpha Prototype Pitch
- Design Fair
- **Designing a Logo**

Why Have a Logo?

- Helps show consumer your brand identity



Why Have a Logo?

- Distinguish yourself from the competition



Why Have a Logo?

- Create brand recognition



Logo Examples

- Iconic visual elements + font choice, juxtaposed

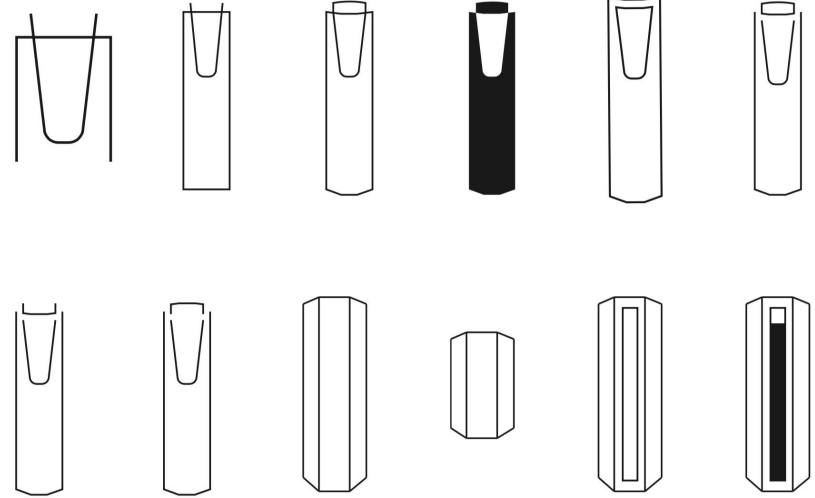


Designing Your Logo

- Slight but relevant text modifications can be very effective and easy



Branding Exercise



infusera

INFUSERA

infusera

INFUSERA

infusera

infusera

1

 infusera

infusera 

2

INFUSERA
I N F U S E R A

INFÜSERA

INFÜSERA

INFUSERA

INFUSERA

Coffee brewed simply, anywhere, anytime.

\$40



Infusera is a bottle that brews coffee on-the-go.

Features include:

- Double walled glass bottle for effective insulation
- Infusera's cloth filter is invertible for easy cleaning
- Octagonal silicone sleeve provides better grip and ergonomic feel

HOW TO USE & INFUSE:

1 INSERT
GROUNDS



2 POUR
WATER



3 STEEP ON
THE GO



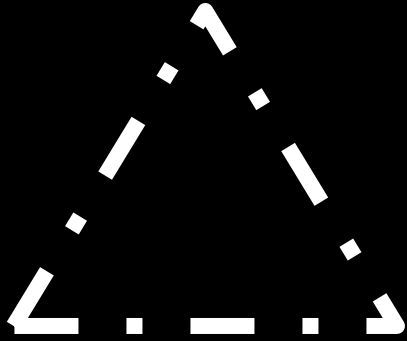
4 INVERT &
STORE FILTER



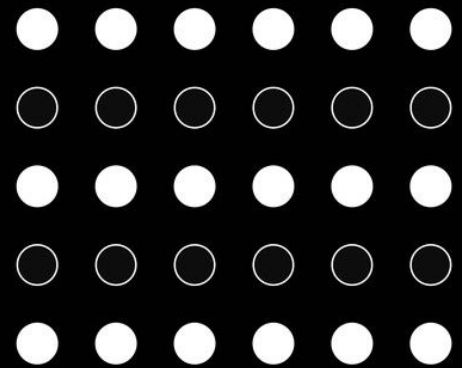
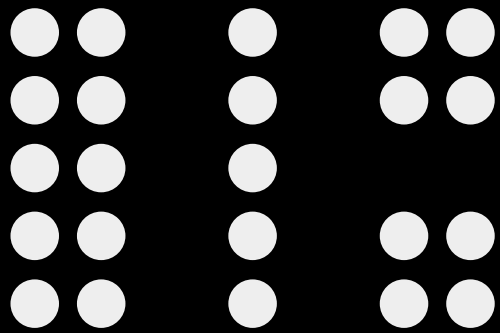
5 ENJOY!



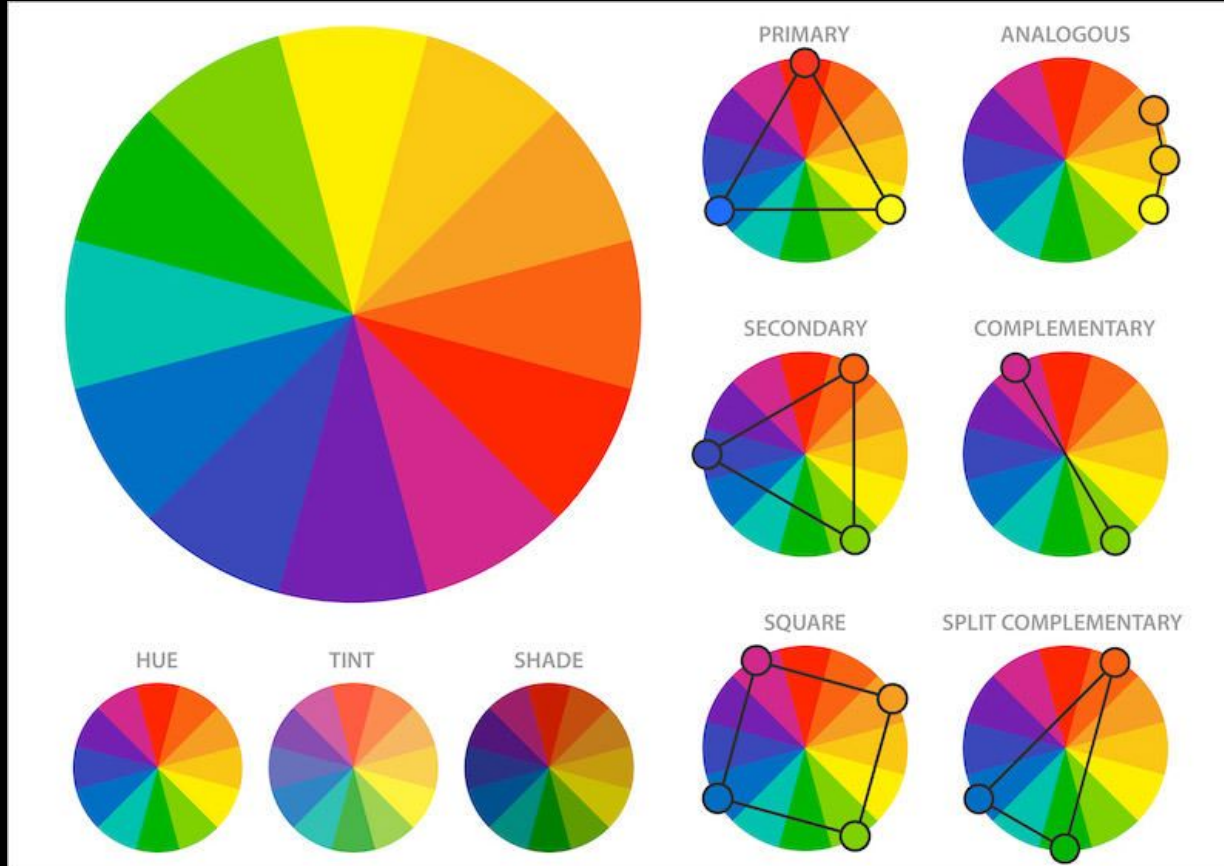
Gestalt Principles: Closure, we prefer completeness



Gestalt Principles: Proximity, Common Fate, Similarity



Color Combinations



Free fonts and icons

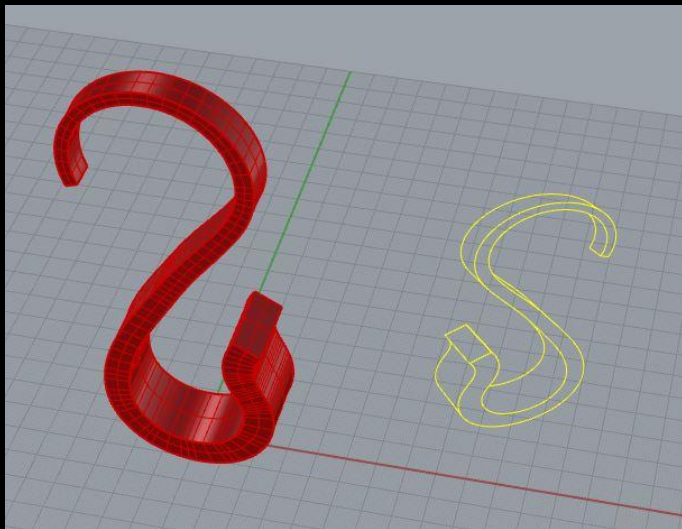
- DaFont
- Font Squirrel
- The Noun Project (icons)
- Flat Icon (icons)

Graphic Design Resources

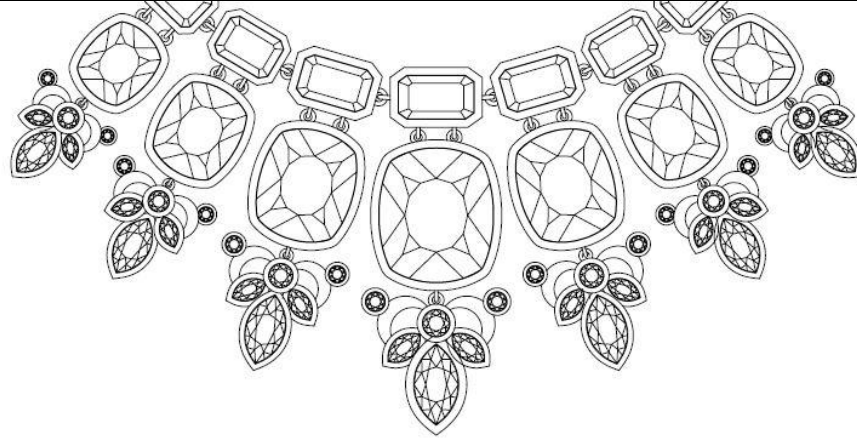
- Canva
- Illustrator
 - Image trace and live paint tools
- Make2D tool in Rhino
 - Do the command as if setting up the composition of a photo
 - Clean up by deleting unnecessary curves
 - Export as .ai file (command: Export)

Rhino - Make2D

- Takes a 2D “picture” of your work in any view or angle you choose - can export as .ai to use in graphic design



Rhino - Make2D

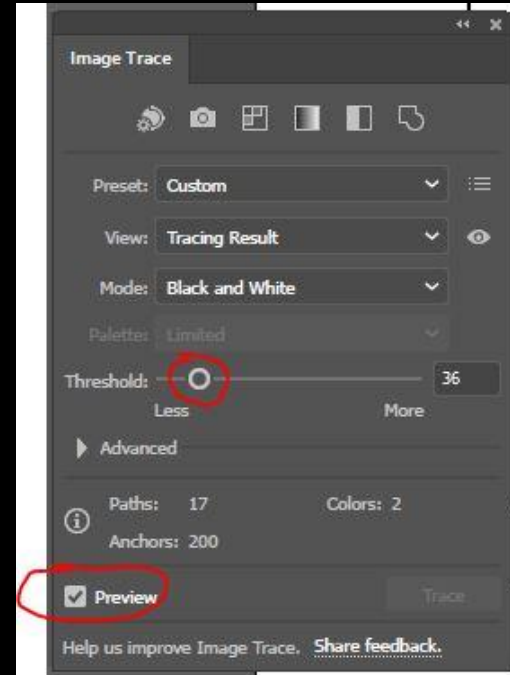
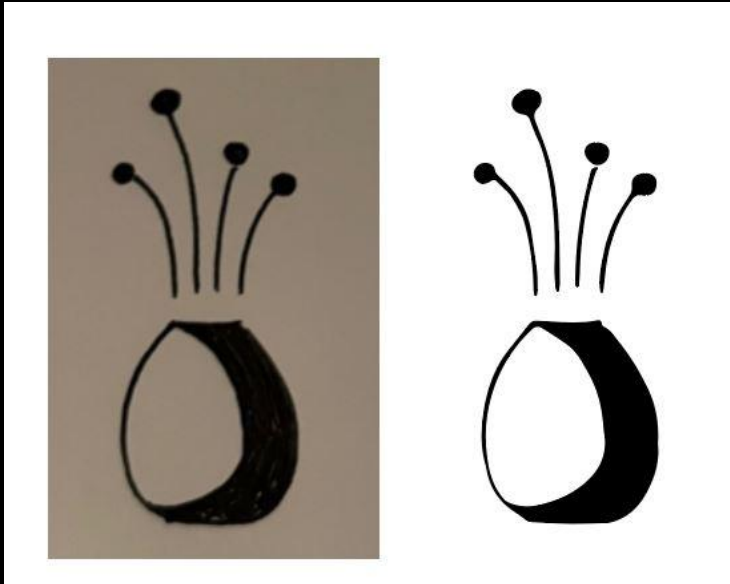


Ashley Marcovitz

Jewelry Design • Portfolio of Work

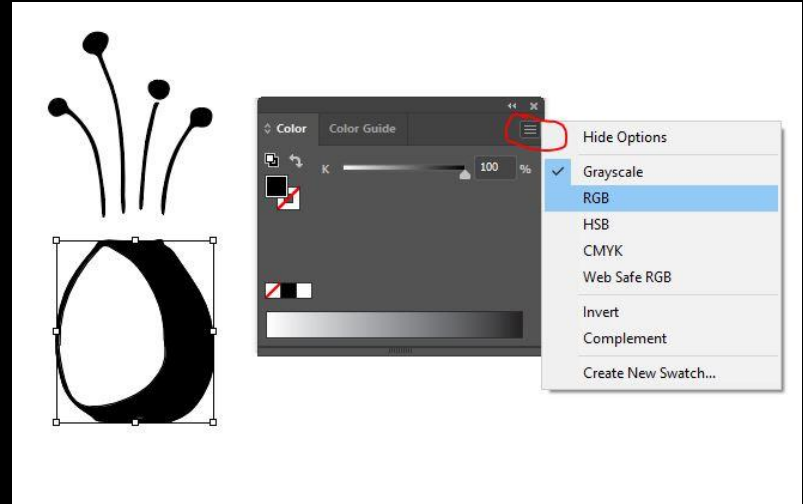
Illustrator - Image Trace

- Image trace - converts an image to a vector for editing in Illustrator
- File -> Place to choose your image
- Window -> Image Trace



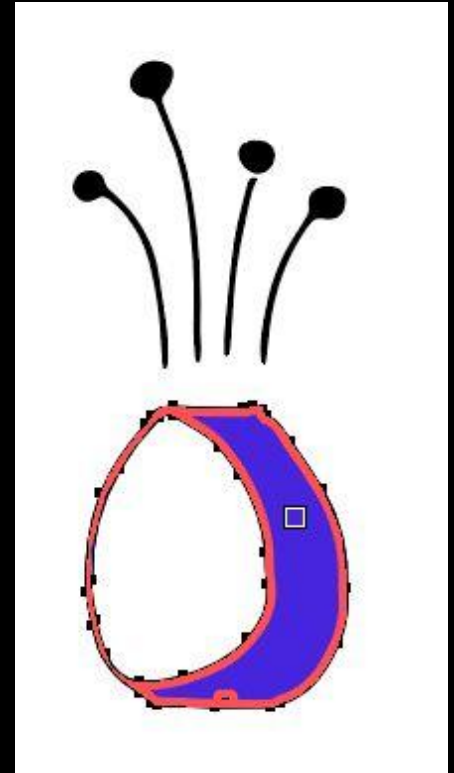
Illustrator - Live Paint

- Live Paint - allows you to easily paint vectors
- If working from image trace, you'll need to follow these steps before you can live paint
 - After image trace, click on image, then go Object -> Expand
 - Right click image, then Ungroup
 - Click individual elements and change mode to RGB (otherwise you are stuck in grayscale mode)



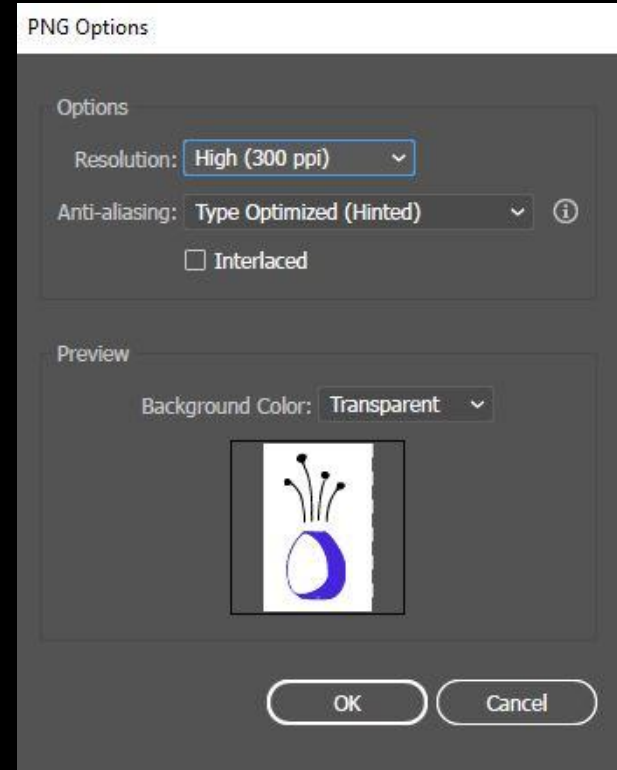
Illustrator - Live Paint

- Choose Live Paint Bucket Icon from right menu, then change the fill color to desired color
- Hover over the area you want to paint until it is outlined in red, then click to paint



Illustrator - Exporting

- When finished, export your work as a .png if you want a transparent background to work with in Canva
 - File -> Export -> ExportAs
- Change settings to 300 ppi (this will be nice and crisp for your poster)
- Choose TRANSPARENT background color

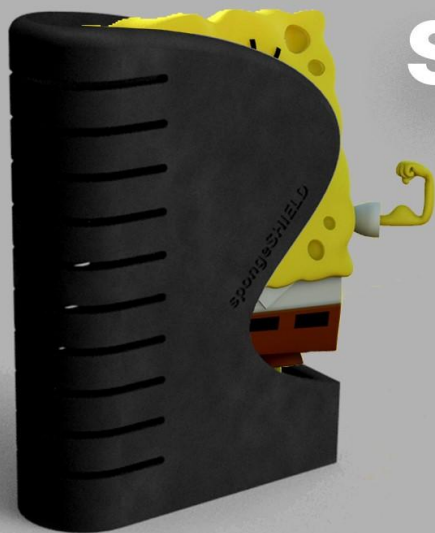


Large Format Printing

- Vitale Digital Media Lab @ Van Pelt Library - printing only (posters and sell sheets)
- Campus Copy Center - for an extra fee, they will mount your poster on foam core

This is the style of easel. Unsupported posters will flop!





spongeSHIELD

\$9.99

Scraper for small crevices or large pans
Holds sponge upright for easy access

Minimum space usage

Dries sponge quickly

Just one part, low cost





DESK KLIP

\$35

More Space, Fewer Spills

Clip this portable beverage and stationary holder onto tiny classroom desks to free up space and prevent spills!



www.deskclip.com

TEAM 2

COINCARD

Designed to seamlessly integrate into your wallet, Coincard transforms your approach to carrying coins.



\$7.50



Functional design.

Three total slots, each equipped to house two quarters. Easy insertion and removal, bumpers keep coins in place.

Convenient size.

The shape and size of a credit card, Coincard slips into any standard wallet slot.

Design your wallet.

Five base colors, two finishes, endless possibilities. Make Coincard your own.

